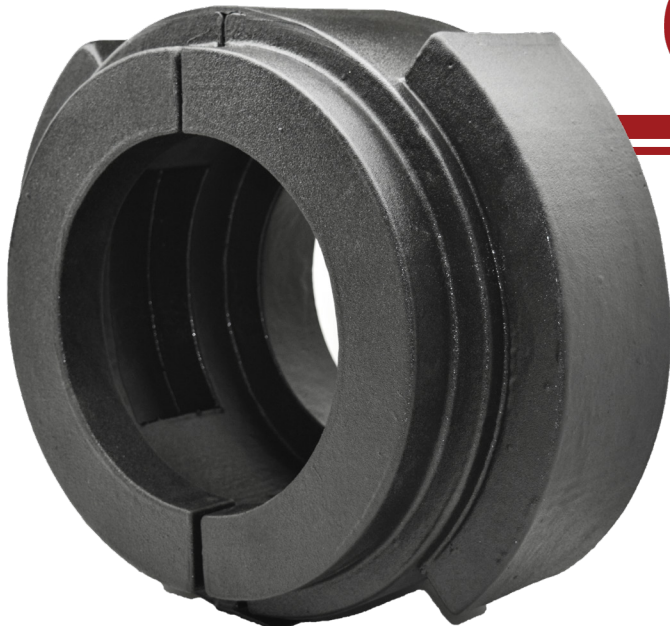


**DURABLE • RE-USABLE • WATERPROOF • CHEMICAL RESISTANT**



**DRAGON JACKET**  
**— INSULATION —**



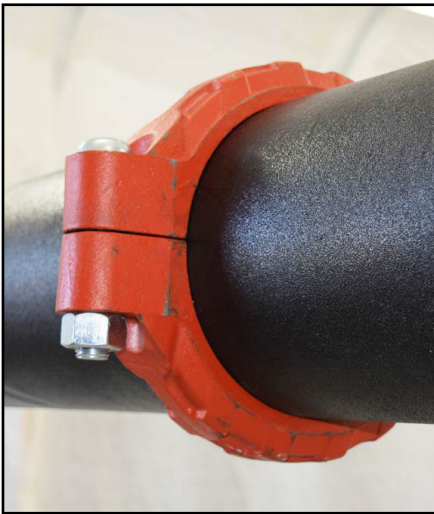
## **POCKETED COUPLING**

Insulates and encapsulates  
Twin Bolt Grooved Couplings  
while creating attachment points  
to and from additional insulation

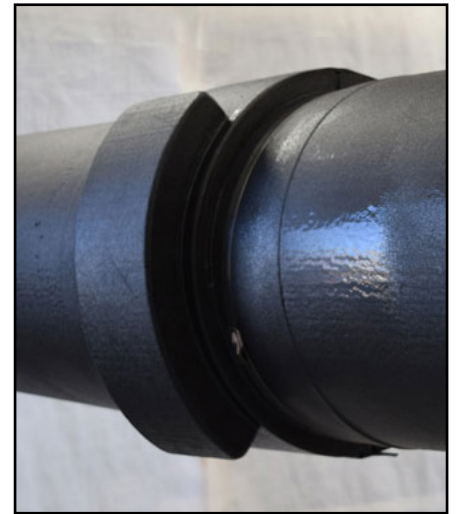
**STATIC R-VALUE**  
12.53 PER 2 INCHES

**OPERATING TEMPERATURE RANGE**  
-60°F to +300°F (-51°C to +149°C)

**STATIC K-FACTOR**  
0.174 BTU-IN/HR-FT<sup>2</sup>-F



**OPEN & CLOSE INSTALLATION**



### **FEATURES & BENEFITS**

- ✓ Lowers total cost of ownership
- ✓ Increases operational efficiencies
- ✓ Eliminates points of failure leading to CUI
- ✓ Faster/safer installation
- ✓ Dimensional stability
- ✓ Maintain insulation integrity
- ✓ Quick access if required
- ✓ Reduce heat loss through points of insulation failure

### **DRAGON JACKET INSULATION™**

14080 N. THAYER ST.  
RATHDRUM, IDAHO 83858  
info@dragonjacket.com

[WWW.DRAGONJACKET.COM](http://WWW.DRAGONJACKET.COM)

### **ENGINEERING PRE-JACKETED SOLUTIONS**

**INNOVATIVE • ENCAPSULATED • INSULATION**

