



# INSULATED PIPE SADDLE

SUPPORTS AND INSULATES PIPE WHILE SEAMLESSLY INTEGRATING WITH SURROUNDING DRAGON JACKET INSULATION

## 100% WATERPROOF

Mitigates Corrosion Under Insulation (CUI)

## OIL & CHEMICAL RESISTANT

Engineered for Demanding Operating Environments

## TOP R-VALUES ON THE MARKET

Wide Temperature Operating Range

## UNMATCHED THERMAL STABILITY

Energy, Process & Cost Efficiency

## FAST & EASY INSTALLATION

Installs 10x Faster with Standard Tools

## REMOVABLE & REUSABLE

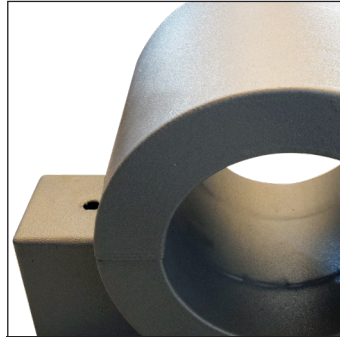
Install, Remove, Inspect, Reinstall, Repeat

## 20+ YEAR LIFESPAN

100% Encapsulated, Impact Resistant, & Impenetrable

## DRAGON JACKET Insulation Features & Benefits:

- Easy install and opening for service, maintenance, and inspection
- Mitigates heat transfer from pipe to surroundings
- Various strengths available to meet loading requirements
- Prevents CUI



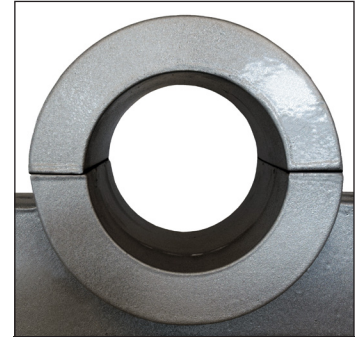
### STRAIGHT BOLT ATTACHMENT

Attach insulated pipe saddle to beam with straight bolts.



### FAST & EASY INSTALLATION

Hinged for quick open and close installation.



### INTEGRATED CONNECTIONS

Easily connect additional insulation.

## DRAGON JACKET INSULATION

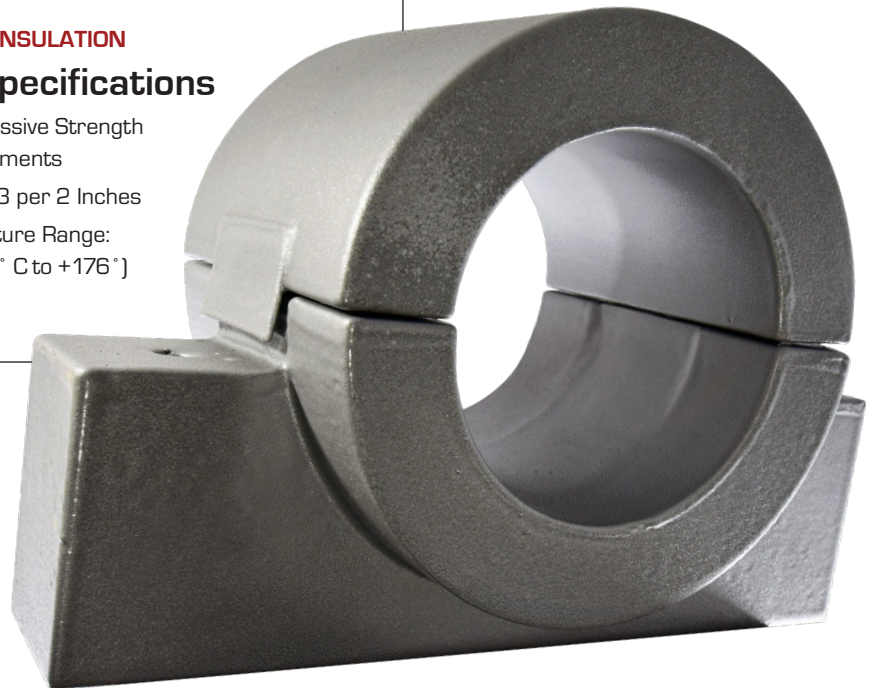
### Technical Specifications

Engineered Compressive Strength Per Project Requirements

Static R-Value: 12.53 per 2 Inches

Operating Temperature Range:

-60° to +350°F (-51° C to +176°)



FDA Approved for Incidental Food Contact  
Made in the USA



**DRAGON JACKET**  
**INSULATION**

208-772-8640

info@dragonjacket.com

www.dragonjacket.com